

*Flexible*  
...with strong roots



**DONGAH  
ELECOMM**



## *DongAh Elecomm: Flexible, with strong roots*

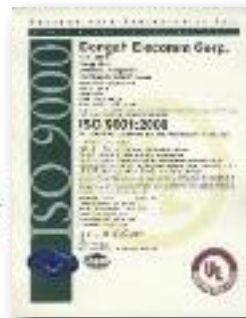
DongAh Elecomm is committed to providing superior quality, innovative design and customer-focused service. We design, manufacture, and market a full line of highly efficient, high-density power solutions for the telecom, industrial, military and medical markets.

DongAh Elecomm develops product lines with extremely flexible architecture and can rapidly modify standard products to meet the needs of customers who require non-standard solutions.



DongAh Elecomm has become a world-class power solutions provider through:

- Dedication to meet our customers' needs for power solutions beyond the ordinary
- Continual development of new innovations for emerging technologies
- Speedy development and delivery of customer-driven solutions
- Business strategies responsive to an ever-changing business environment



# Applications

## Telecommunications

- Mobile communications
- Switching systems
- ATM / TDX / PBX
- Transmission equipment
- Network equipment
- Digital broadcast equipment
- Optical transmission equipment
- Satellite base stations

## Industrial Equipment

- SMT devices for printed circuit boards
- High-speed rail signal control equipment
- Robotics
- Programmable logic controller
- Computer numerical controller
- Display Systems

## Medical Equipment

- Patient Monitoring
- CAT Scan Equipment
- Laboratory / Analysis
- Ultrasound Equipment

## Datacom/Networking

- Servers
- Routers
- Switches
- Storage

## Defense Equipment

- Communication Systems
- Radar Systems
- Guided Weapons
- Maritime



# Communications

## Power Shelves / Energy Systems

At DongAh Elecomm, we understand that there is no such thing as a standard power shelf. While we have many existing products, we expect our customers will require modifications from simple to complex. We bring our experience of more than 40 years as a global leader of power supply production to power our customers' world-changing technologies.

***DongAh Elecomm is South Korea's number one supplier of hot-swap redundant power supplies.***





# Military

## Radar Systems

DongAh Elecomm was selected as the power supply development partner for military radar systems because of our extensive experience and solid reputation in the power industry.

We developed a custom power solution that is highly efficient and reliable even in the most extreme environmental conditions.

We pride ourselves on our ability to meet and support mission critical military requirements with flexibility and innovation.



### Features:

- Power rectifier for radar systems
- Wide-range output voltage
- Compact, modular design (easy maintenance)
- High power density; fan-cooled design
- Parallel connection, up to 20 modules
- Output current & voltage control modes
- Soft start for safe, energy-efficient operation
- LED alarm indicators
- Constant electric power control



# Military

## Guided Weapons



## Military Communication Systems





# Industrial

## Power for Traffic Control Equipment

Leading-edge manufacturers choose DongAh Elecomm power supplies for their advanced traffic control hardware.

The DongAh Elecomm 2070-4A power supply meets and exceeds CALTRANS 2002 Transportation Electrical Equipment Specifications (TEES).

### Features:

- Fast replacement package design
- Convection cooled operation in rugged environment
- Meets conducted EMI Class A
- Designed for worldwide safety approvals
- Conforms to TEES 2009 Spec (and ERRATA No. 1) for MODEL 2070-4 POWER SUPPLY MODULE



*The 2070-4A Power Supply Module is one of the few power supplies on the market that meets the CALTRANS 2070 Standard.*

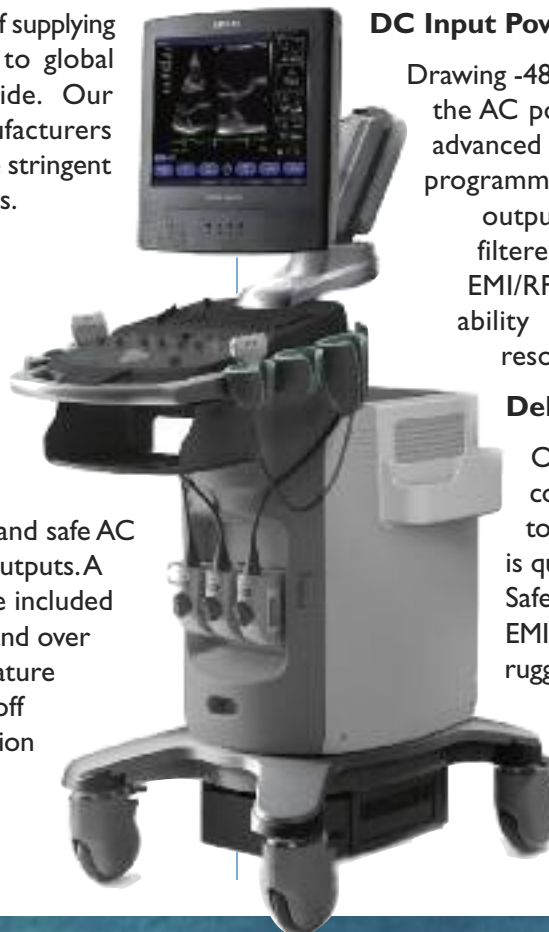
# Medical

DongAh Elecomm has a long history of supplying extreme reliability power systems to global medical device suppliers worldwide. Our company is one of the few manufacturers offering power supplies that meet the stringent requirements for medical applications.

## Two Solutions for an Ultrasound Diagnostic System

### AC Input Power System:

This system has an isolation transformer to provide 10 amps of clean and safe AC power with -48VDC and +12VDC outputs. A complete suite of control circuits are included for battery charging, system cooling and over voltage / over current / over temperature protection. Front panel AC inlet, on/off switch and six LEDs for visual indication of system status and field utilization.



### DC Input Power System:

Drawing -48VDC input power from either the AC power system or batteries, this advanced power system provides fifteen programmable and sequenced DC outputs. The output voltages are filtered to reduce ripple, noise, and EMI/RFI, improving our customer's ability to provide accurate, high resolution images.

### Deliverables:

Our customer receives a complete power system designed to fit their specific application that is qualified to International Medical Safety Standards, meets Class B EMI/RFI Standards and designed for rugged ability in a mobile cart that may experience high amounts of shock and vibration.

# Green Power

## Water Ballast System

DongAh Elecomm's power expertise led us to be chosen as the technology partner in the development of the Electro-Cleen™ Ballast Water Treatment System.

We were able to produce a compact, custom solution with 85% efficiency, supplying parallel power up to 162Kw for electrolysis water treatment.

We're proud to be a part of this effort for a healthier planet!



*Our BREC-18 Rectifier Module meets ballast water treatment power requirements*

### Features:

- Power rectifier for ballast water treatment
- Wide-range input voltage (3Ø, 375VAC ~ 510VAC)
- Compact, modular design (easy module replacement)
- High power density; water-cooled design
- Parallel connection, up to 8 modules
- Output current & voltage control modes
- Soft start for safe, energy-efficient operation
- LED alarm indicators
- Constant electric power control

Our customers have

**HIGH-EFFICIENCY**

**POWER** for a healthier planet

*DongAh Elecomm's new high-efficiency power shelf provides substantial energy savings and reduces loss by more than 50% over conventional systems.*

With up to 96% efficiency in a compact 1RU-high shelf, this system significantly reduces energy consumption and environmental impact. Its easy installation and maintenance make it ideal for power-hungry datacom and telecom applications where it not only reduces CO2 emissions into the atmosphere, but cuts operational costs as well.

### Features:

- Up to 96% efficiency
- 19" Rack-mount unit
- Hot-swappable
- Remote access
- Automatic battery charging
- N+1 redundancy
- Battery low voltage disconnect

Call **DongAh Elecomm** today to learn more about our high-efficiency power solutions for a healthier planet!







**We've got the power  
to keep it green.**



**DONGAH ELECOMM**

[www.dongahелеcomm.co.kr](http://www.dongahелеcomm.co.kr)

**Worldwide Support:** [cwkim@dongahелеcomm.co.kr](mailto:cwkim@dongahелеcomm.co.kr)

**South Korea:**

167 Namgok-Ri  
Yangji-Myun, YongIn-Si  
KyunggiDo, South Korea  
TEL: +82-31-330-5557

**North America:**

1300 E Lookout Dr. #210  
Richardson, TX 75082  
Phone: (972) 497-9990  
Fax: (972) 497-9991

**Vietnam:**

Luong Son IZ  
Hoa Son Commune  
Luong Son District,  
Hoa Binh Province  
Tel: +84-218-382-6781~2

**Thailand:**

66 Soi, Prachautid 59,  
Yeak 3, Bangmod, Thungkhru  
Bangkok 10140  
Tel: +66-91-050-0462

**Indonesia:**

Graha Kapital 2 Lt.1.  
Jl. Kemang Raya No.7  
Jakarta Selatan 12730  
Tel: +82-70-4132-4100

**China:**

No.509, Hua Jing Road,  
Xuhui District, Shanghai  
China  
Tel: +82-31-330-8895